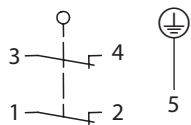




Metal bodied limit switch

Series M49

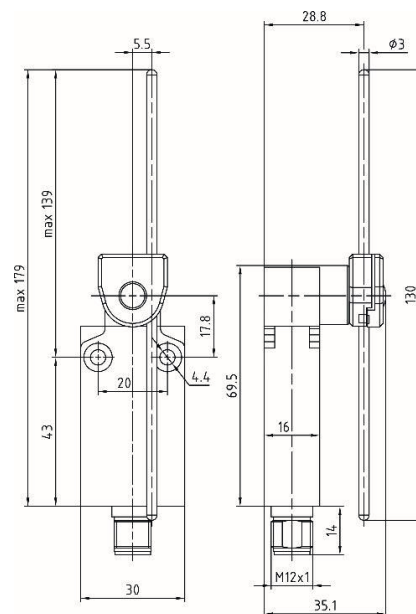
Description **M49-A2 AD Z M12**Article number **6023000128**

A diagram of a cell with labels 1 through 5. Label 1 points to the cell membrane. Label 2 points to the nucleus. Label 3 points to the nucleolus. Label 4 points to the cytoplasm. Label 5 points to a vacuole.

Figure 1: Schematic representation of the experimental setup. The diagram shows a vertical column with a black upper section and a white lower section. The black section is labeled '3-4' and '1-2' at the top. The white section is labeled '0,08 Nm' on the right. The column is labeled '0°' at the top, '26°' on the left, and '75°' at the bottom. A double-headed arrow is at the bottom.

 **On**
 **Off**

Tolerance:
 Operating points $\pm 1^\circ$;
 Operating torque $\pm 0,01 \text{ Nm}$



Electrical Data

Rated insulation voltage	U _i	250 V
Conv. thermal current	I _{the}	4 A
Rated operational voltage	U _e	240 V AC / 24 V DC
Utilization category		AC-15, 240 V / 3 A; DC-13, 24 V / 2 A
Short-circuit protective device U _e < 500 V a.c. - gG type fuses		Fuse 4 A gG
Protection class	I	

Mechanical data	
Enclosure	Zn die-casting, powder coated, RAL 7001 (silver gray)
Actuator	Axle lever housing (Zn die-casting, galvanized), AD-rod (stainless steel)
Ambient air temperature	
-during operation	-25 °C ... +70 °C
-for storage	-40 °C ... +70 °C
Contact type	Slow action, 2 N.C. (Form Zb)
Mechanical life	10 x 10 ⁶ switching cycles
Switching frequency	3600 / h
Velocity for actuating	0,5 m/s
Resistance between contacts	< 25 mΩ
Connection	1 x plug M12x1 ; 5-pole, male
Weight	0,165 kg
Installation position	All positions are authorized
Protection type	IP67 acc. to IEC/EN 60529

Standards
DIN EN 60947-5-1

EU Conformity
acc. to directive 2014/35/EU (Low-Voltage-Directive)

Approvals
cUL _{US} (B300, R300)
CCC

Notes
Type 4 -X – 6 enclosure ("outdoor use - raintight - watertight corrosion resistant") acc. to UL50